

# Curves Luxe

By Lucy Castillo



**OFFICIAL CATALOGUE 2026**



@curveluxe.lc



## MY EXPERIENCE WITH SHAPEWEAR

After losing my baby, my body changed. Even though I've always had good self-esteem, I felt uncomfortable with the sagging skin and inflammation. That's when I discovered fajas and waist cinchers, and they helped me feel better. As women, we go through so many transformations: pregnancy, menopause, hormonal changes... There are no magic solutions, but if something can make us feel more confident and comfortable during the process, why not use it? For me, shapewear has been my best ally.

– Lucy Castillo

# TABLE OF CONTENTS

## **REALMAX**

SHAPE YOUR FIGURE

## **CURVY**

ODIES WITH A NARROW WAIST AND WIDE HIPS.

## **SEAMLESS**

UNNOTICEABLE UNDER ANY CLOTHING.

## **RELOJ DE ARENA**

TO ENHANCE YOUR CURVES.

## **FIT**

INSTANTLY SLIM DOWN YOUR WAISTLINE

## **FASHION**

TO SHAPE YOUR FIGURE

## **POSTQUIRÚRGICA**

FOR OPTIMAL HEALING.





# **WE SHAPE BEAUTY WITH COLOMBIAN ORIGINS AND GLOBAL REACH**



**Control garments that enhance natural body curves with**

With greater compression, instantly shapes and contours your figure.





## EXCLUSIVE TECHNOLOGY

The technology behind our garments guarantees not only quality, but also a constant research in the cosmetics and beauty industry. From integrated assets that are released on contact with the skin, to smart fabrics that adapt to the needs of the body.

## CERTIFICATIONS OF OUR FABRICS

Quality and safety are our top priorities. Each of the fabrics we use has international certifications that guarantee their excellence. This ensures that the material is hypoallergenic and skin-friendly, as well as resistant to frequent washing and able to maintain its original compression for a much longer time. With Silene shapewear, you get more than just an aesthetic result; you also get the peace of mind that comes with wearing a certified quality garment. Perfect Shape: Strategic shaping and anatomical t. Eco Process: Sustainable and environmentally friendly textile process. Comfort Fit: Technology that provides softness, breathability, and firmness.



Comfort Fit



Eco Fabric



Perfect Shape



Eco Process

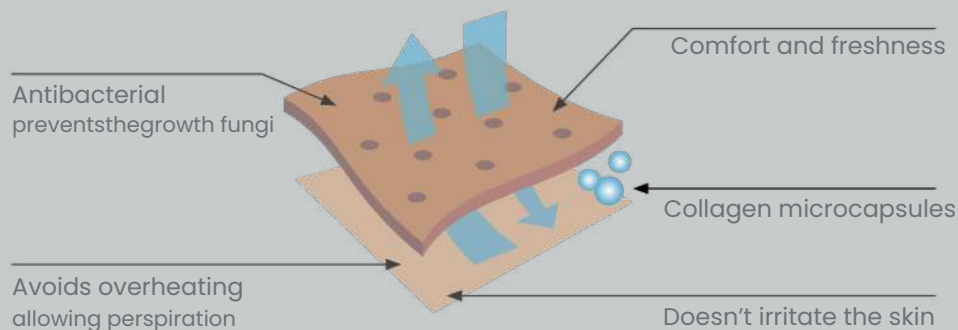


## WE APPLY PREMIUM FINISHES TO THE RAW MATERIALS



Every Silene product stands out for the premium quality of its raw materials, such as Nylon 6.6, Lycra® Xtra Life™, and Lycra® Beauty.

These high-performance fibers provide our garments with a soft touch and superior resistance to wear and tear.



**WE THINK ABOUT  
YOUR FIGURE AND  
YOUR HEALTH**

## MATERIAL PROPERTIES

- It creates a microclimate through its internal air pockets, allowing moisture to be wicked away to the outside.
- It promotes airflow for a refreshing sensation of coolness.
- Our premium material retains its shape after every wear and will not deform, even with frequent washing.

# CARING FOR YOUR SKIN, A COMMITMENT TO QUALITY



## WHY DO OUR GIRDLES MAKE A DIFFERENCE?

- At **CURVE LUXE**, every garment undergoes a rigorous quality control process, from fabric selection to manufacturing and packaging.
- We use state-of-the-art textile technology, precise pattern making, and professional finishes.
- Because we know that shaping your body requires confidence, and that confidence is earned through.

**MADE IN COLOMBIA, VALUE YOU CAN FEEL. 100% COLOMBIAN PRODUCTION**

We are committed to national talent: our plant in Cali generates decent employment, promotes local development, and adheres to the highest manufacturing standards. Each seam carries the essence of a tradition that exudes fashion, beauty, and precision. This reinforces pride in our origins and social commitment.



Comfort Fit



Eco Fabric



Perfect shape



Eco Process





## ATTRIBUTES THAT MAKE THE DIFFERENCE

DETAILS THAT DEFINE YOUR FIGURE... AND YOUR COMFORT

**Intelligent compression** Our girdles apply the right amount of compression to key areas, shaping without discomfort and enhancing the figure with an hourglass effect.



**Double layer in the abdomen:**  
greater control and definition.



**Invisible back:**  
natural enhancement without marking.



**Invisible seams:**  
smooth effect under clothing.



**Adjustable and removable straps:**  
versatility for all body types.



**Shoulder on front clasps:**  
greater firmness and fit.



**Silicone lace:**  
elegance without slipping.



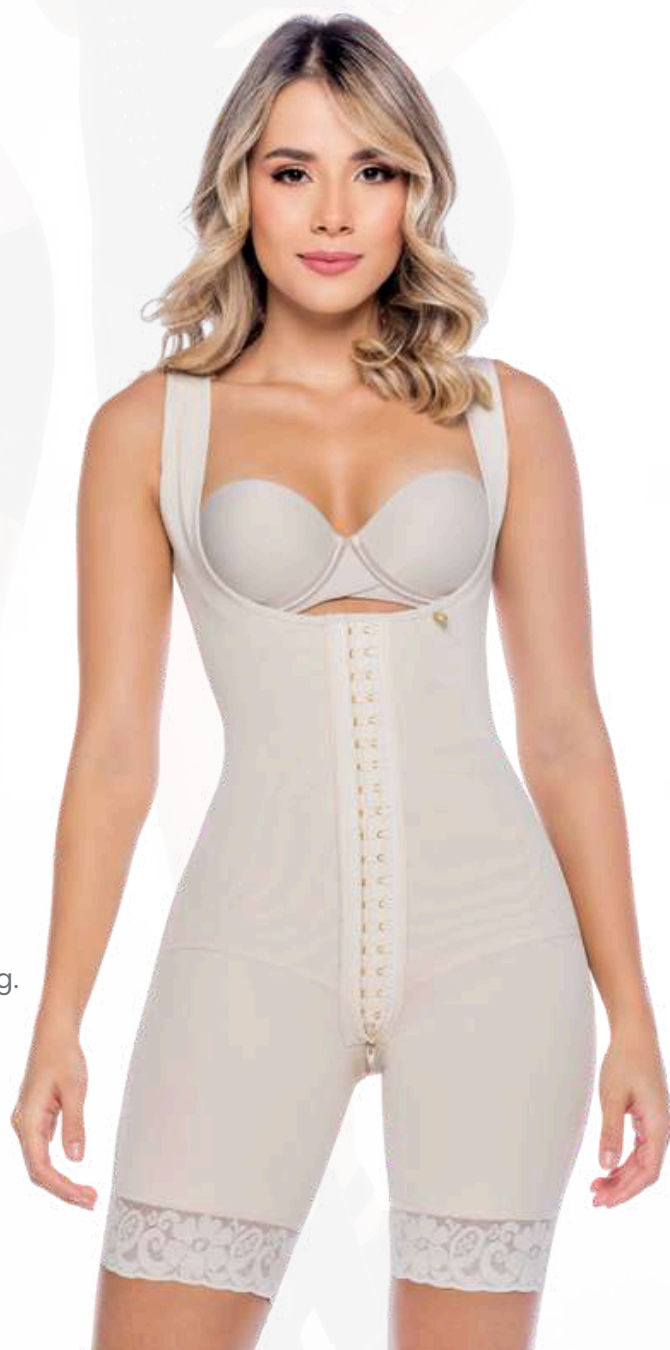
**Lumbar reinforcement:**  
improves posture.



**Internal boning:**  
shapes and maintains firmness all day long.



**Perineal opening or lower clasp:**  
total comfort for everyday wear.



## TOP-QUALITY FABRIC

At Curve Luxe, we are 100% committed to your satisfaction. That is why our top priority is producing high-quality garments using only the finest raw materials, premium fabrics, and advanced design technologies.



Comfort Fit



Soft Fabric



Perfect shape



Skin Protection

## SPECIALIZED MATERIALS



### FABRIC HIGH TECHNOLOGY



Our high-tech fiber-engineered fabrics provide a perfect fit in areas where stability and comfort are most needed, all while remaining soft to the touch. Our textiles offer superior support while maximizing overall comfort.



### **Reinforced clasps and dual-adjustment system**

Greater firmness thanks to internal hooks and an external zip, providing security, discretion, and all-day support.

### **Premium finishes and invisible seams**

Clean, modern design with no marks under clothing. Perfect for a smooth, sculpted look with any outfit.

### **Colombian manufacturing with over 20 years of experience**

Each shapewear piece is crafted by expert hands at our facility in Cali, Colombia, ensuring quality, technique, and tradition in every stitch.

### **Ready for export from Miami to the world**

We receive the merchandise in the United States and ship globally. Your inventory arrives quickly and hassle-free.

### **Partners in your growth**

Curve Luxe doesn't just sell products we offer personalised advice, promotional materials, investment-size flexibility, and the opportunity to create your own brand.









# REAL MAX

## HIGH CONTROL GARMENTS TO SHAPE YOUR FIGURE

### CLASSIC

High-technology compression garments **made from next-generation Colombian PowerNet**, certified to international quality standards. Its anatomical moulding structure and precision classic clasps guarantee maximum definition, even control, and long-lasting support without compromising flexibility

### LUXURY

Advanced compression technology with luxury finishes. Crafted from premium **PowerNet with intelligent reinforcement for enhanced durability**, they feature gold-tone metal fastenings and haute couture detailing. Designed to deliver extreme control, precise definition, and an elegant, exclusive wearing experience



# REAL MAX

REF / STYLE

105

## SHAPEWEAR BODYSUIT WITH LACE

Reinforced  
waist



### AVAILABLE SIZES SIZE CHART

SIZES	WAIST (CM)	HIP (INCHES)
XS	62.0 - 66.9	24.4 - 26.3
S	67.0 - 71.9	26.4 - 28.3
M	72.0 - 76.9	28.3 - 30.3
L	77.0 - 81.9	30.3 - 32.2
XL	82.0 - 86.9	32.3 - 34.2
2XL	87.0 - 91.9	34.3 - 36.2
3XL	92.0 - 96.9	36.2 - 38.1
4XL	97.0 - 101.9	38.2 - 40.1
5XL	102.0 - 106.9	40.2 - 42.1
6XL	107.0 - 111.9	42.2 - 44.1
7XL	112.0 - 116.9	44.1 - 46.0

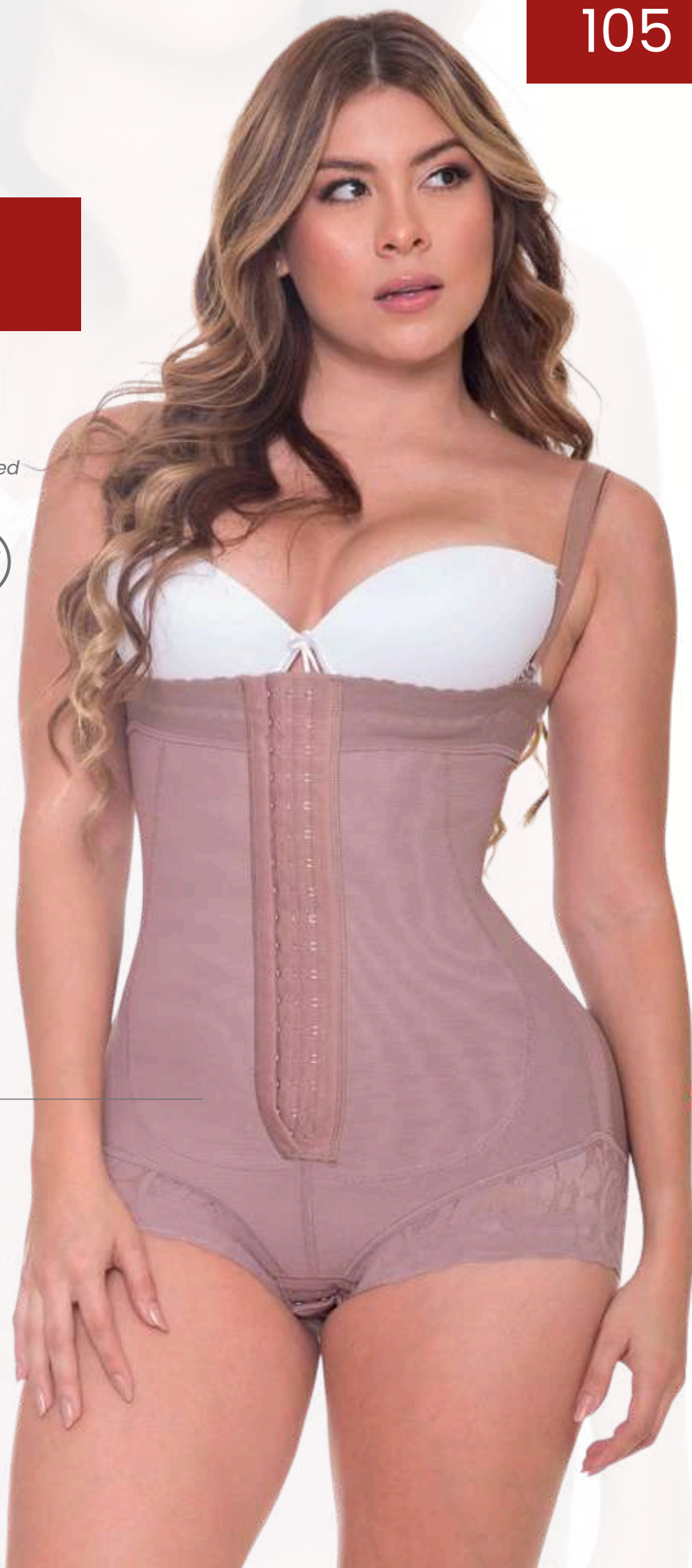
### COLORS

Black - Cocoa - Beige



### IMPORTANT

Starting at size 2XL, there is an additional cost of £3.00 per size.







Double layer  
in the  
abdomen



Material:



Strapless shaping  
bodysuit with maximum  
buttock enhancement.  
Designed for women  
seeking total definition  
and support in the key  
areas of the silhouette

Hooks for 3  
adjust levels



Level compression:



4 High  
control

Silicone lace



Recommended  
uses:



Post  
surgery



Postpartum



Daily use



Maximum  
buttock lift

# REAL MAX

REF / STYLE

1051

## CLEO CURVE BODY

Wide,  
anatomical and  
padded straps



Free bust  
design



### AVAILABLE SIZES SIZE CHART

SIZES	WAIST (CM)	HIP (INCHES)
XS	62.0 - 66.9	24.4 - 26.3
S	67.0 - 71.9	26.4 - 28.3
M	72.0 - 76.9	28.3 - 30.3
L	77.0 - 81.9	30.3 - 32.2
XL	82.0 - 86.9	32.3 - 34.2
2XL	87.0 - 91.9	34.3 - 36.2
3XL	92.0 - 96.9	36.2 - 38.1
4XL	97.0 - 101.9	38.2 - 40.1
5XL	102.0 - 106.9	40.2 - 42.1
6XL	107.0 - 111.9	42.2 - 44.1
7XL	112.0 - 116.9	44.1 - 46.0

### COLORS

Black - Cocoa - Beige



### IMPORTANT

Starting at size 2XL, there is an additional cost of £3.00 per size.





Doble c  
Double layer  
in the  
abdomen



Hooks for 3  
adjust  
levels

Material:



High-technology shapewear with premium compression. Advanced high-level compression sculpts and streamlines the abdomen, waist, and back strategically, refining the silhouette with firm, precise control

Level compression:



High  
control



Posture  
correction

Recommended uses:



Post surgery



Postpartum



Daily use



Maximum  
buttock lift



# REAL MAX

REF / STYLE

705

## SMOOTH LIFT SHORT

*abdomen  
control*



### AVAILABLE SIZES SIZE CHART

SIZES	WAIST (CM)	HIP (INCHES)
XS	62.0 - 66.9	24.4 - 26.3
S	67.0 - 71.9	26.4 - 28.3
M	72.0 - 76.9	28.3 - 30.3
L	77.0 - 81.9	30.3 - 32.2
XL	82.0 - 86.9	32.3 - 34.2
2XL	87.0 - 91.9	34.3 - 36.2
3XL	92.0 - 96.9	36.2 - 38.1
4XL	97.0 - 101.9	38.2 - 40.1
5XL	102.0 - 106.9	40.2 - 42.1
6XL	107.0 - 111.9	42.2 - 44.1
7XL	112.0 - 116.9	44.1 - 46.0

### COLORS

Black - Cocoa - Beige



### IMPORTANT

Starting at size 2XL, there is an additional cost of £3.00 per size.





Non-slip lace

Material:



Shaping shorts with natural buttock enhancement and low abdominal control. Designed to provide a harmonious silhouette and remain discreet under any garment

Level compression:



High control

Recommended uses:



Daily use



Maximum buttock lift

**REAL MAX**

Wide  
seamless  
straps



REF / STYLE

**504**

## BRASIER GIRDLE

BACK SUPPORT

### AVAILABLE SIZES SIZE CHART

SIZES	WAIST (CM)	HIP (INCHES)
XS	62.0 - 66.9	24.4 - 26.3
S	67.0 - 71.9	26.4 - 28.3
M	72.0 - 76.9	28.3 - 30.3
L	77.0 - 81.9	30.3 - 32.2
XL	82.0 - 86.9	32.3 - 34.2
2XL	87.0 - 91.9	34.3 - 36.2
3XL	92.0 - 96.9	36.2 - 38.1
4XL	97.0 - 101.9	38.2 - 40.1
5XL	102.0 - 106.9	40.2 - 42.1
6XL	107.0 - 111.9	42.2 - 44.1
7XL	112.0 - 116.9	44.1 - 46.0

### COLORS

Black - Cocoa - Beige



### IMPORTANT

Starting at size 2XL, there is an additional cost of £3.00 per size.







Hooks for 3  
adjust levels

Material:



Medium compression with an ergonomic design: naturally shapes the bust, upper abdomen, and back, providing gentle and effective control for everyday wear or post-operative use

Upper  
abdomen  
control

Level compression:



Medium control

Recommended uses:



Cosmetic  
surgery



Post surgery



Daily use



High back with  
anatomical  
design





# REAL MAX

Free bust  
design



REF / STYLE

806

9 Internal lateral  
reinforcement  
rods



## SKINVEST

### AVAILABLE SIZES SIZE CHART

SIZES	WAIST (CM)	HIP (INCHES)
XS	62.0 - 66.9	24.4 - 26.3
S	67.0 - 71.9	26.4 - 28.3
M	72.0 - 76.9	28.3 - 30.3
L	77.0 - 81.9	30.3 - 32.2
XL	82.0 - 86.9	32.3 - 34.2
2XL	87.0 - 91.9	34.3 - 36.2
3XL	92.0 - 96.9	36.2 - 38.1
4XL	97.0 - 101.9	38.2 - 40.1
5XL	102.0 - 106.9	40.2 - 42.1
6XL	107.0 - 111.9	42.2 - 44.1
7XL	112.0 - 116.9	44.1 - 46.0

### COLORS

Black - Cocoa - Beige



### IMPORTANT

Starting at size 2XL, there is an  
additional cost of £3.00 per size.





Front zipper closure



Material:



High compression with immediate effect: precisely defines the waist, abdomen, and back, shaping the silhouette from the very first wear

Lower curved base

Level compression:



High control

Adjustable straps

Recommended uses:



Post surgery



Postpartum



Daily use

High back with anatomical design



# REAL MAX

REF / STYLE

RM04

## LUXURY SHAPING SHORTS WITH BUTTOCK LIFT

LIFT LUXE

Double layer  
in the  
abdomen



### AVAILABLE SIZES SIZE CHART

SIZES	WAIST (CM)	HIP (INCHES)
XS	62.0 - 66.9	24.4 - 26.3
S	67.0 - 71.9	26.4 - 28.3
M	72.0 - 76.9	28.3 - 30.3
L	77.0 - 81.9	30.3 - 32.2
XL	82.0 - 86.9	32.3 - 34.2
2XL	87.0 - 91.9	34.3 - 36.2
3XL	92.0 - 96.9	36.2 - 38.1
4XL	97.0 - 101.9	38.2 - 40.1
5XL	102.0 - 106.9	40.2 - 42.1
6XL	107.0 - 111.9	42.2 - 44.1
7XL	112.0 - 116.9	44.1 - 46.0

### COLORS

Black - Cocoa - Beige



### IMPORTANT

Starting at size 2XL, there is an additional cost of £3.00 per size.







Front zipper closure



Intimate closure



Material:



Shaping shorts with Diamond Buttocks enhancement and abdominal reinforcement. Designed to provide firm control and maximise the silhouette, they are ideal for daily or post-surgical use, offering all-day comfort and support

Level compression:



High control

High back with anatomical design



Maximum buttock lift



Medium-length shorts design



Recommended uses:



Cosmetic surgery



Post surgery



Postpartum



Daily use



*CurveLux*  
By Lucy Castillo

# REAL MAX

REF / STYLE  
RM03

## SHAPING SHORTS WITH PRO SCULPTING

SCULPT PRO

### AVAILABLE SIZES SIZE CHART

SIZES	WAIST (CM)	HIP (INCHES)
XS	62.0 - 66.9	24.4 - 26.3
S	67.0 - 71.9	26.4 - 28.3
M	72.0 - 76.9	28.3 - 30.3
L	77.0 - 81.9	30.3 - 32.2
XL	82.0 - 86.9	32.3 - 34.2
2XL	87.0 - 91.9	34.3 - 36.2
3XL	92.0 - 96.9	36.2 - 38.1
4XL	97.0 - 101.9	38.2 - 40.1
5XL	102.0 - 106.9	40.2 - 42.1
6XL	107.0 - 111.9	42.2 - 44.1
7XL	112.0 - 116.9	44.1 - 46.0

Double layer  
in the  
abdomen



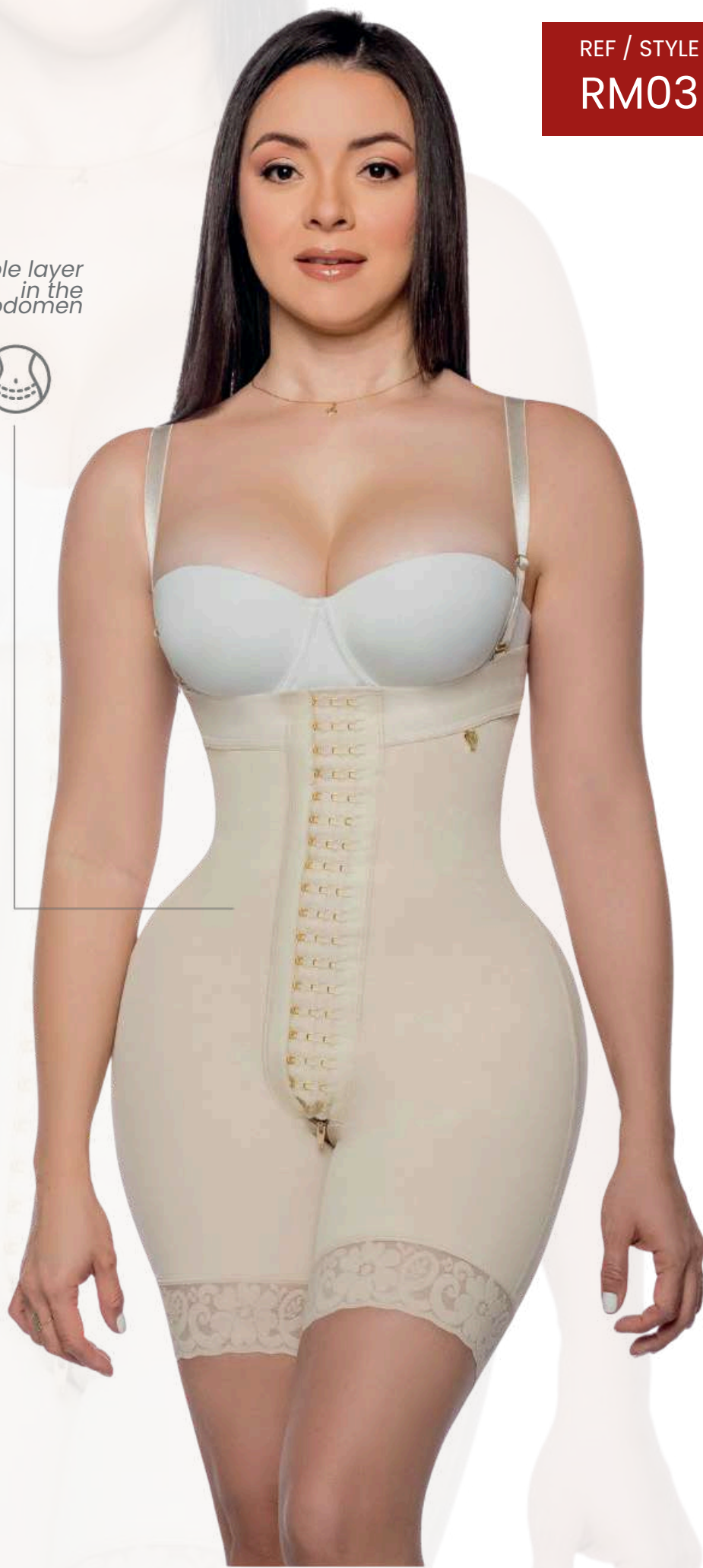
### COLORS

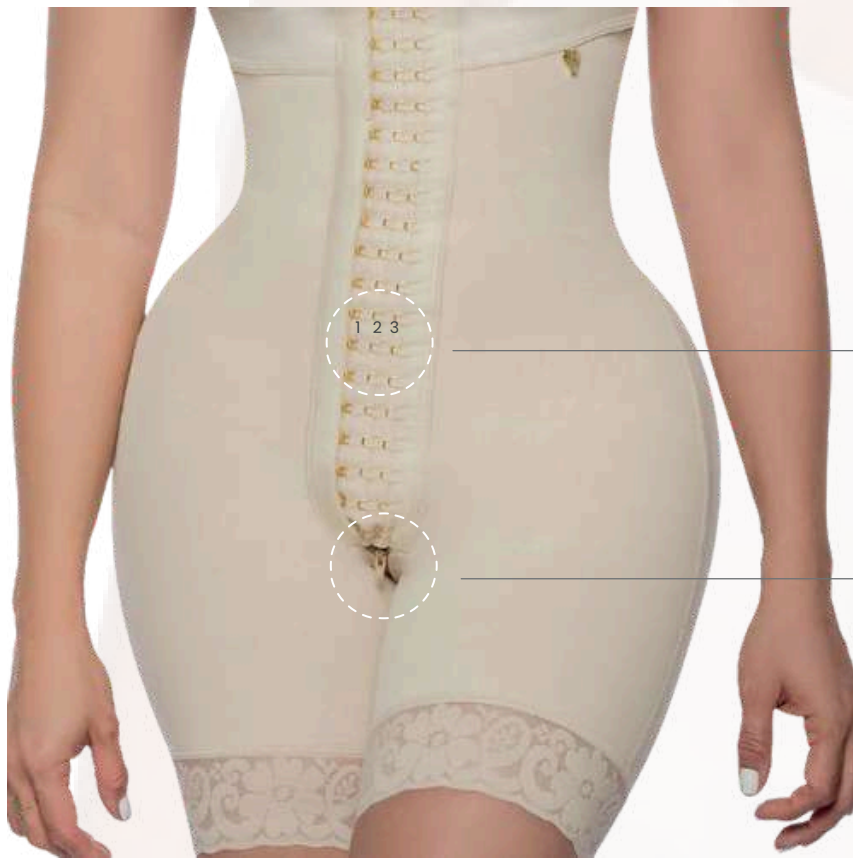
Black - Cocoa - Beige



### IMPORTANT

Starting at size 2XL, there is an additional cost of £3.00 per size.





*Hooks for 3  
adjust  
levels*

*Intimate  
closure*



**Material:**



Shaping shorts with Diamond Buttocks enhancement and abdominal reinforcement. Designed to provide firm control and maximise the silhouette, they are perfect for daily or post-surgical use, offering all-day comfort and support

*Level compression:*



*Recommended uses:*



*Cosmetic  
surgery*



*Post surgery*



*Postpartum*



*Daily use*



*High back with  
anatomical design*



*Maximum  
buttock lift*



*Medium-length  
shorts design*



*CurveLuxe*  
By Lucy Castillo



# REAL MAX

REF / STYLE  
**RM08**

## SHAPING SHORTS WITH DIAMOND CURVE DIAMOND CURVE

*Double layer  
in the abdomen*



*Wide  
seamless  
straps*



### AVAILABLE SIZES SIZE CHART

SIZES	WAIST (CM)	HIP (INCHES)
XS	62.0 - 66.9	24.4 - 26.3
S	67.0 - 71.9	26.4 - 28.3
M	72.0 - 76.9	28.3 - 30.3
L	77.0 - 81.9	30.3 - 32.2
XL	82.0 - 86.9	32.3 - 34.2
2XL	87.0 - 91.9	34.3 - 36.2
3XL	92.0 - 96.9	36.2 - 38.1
4XL	97.0 - 101.9	38.2 - 40.1
5XL	102.0 - 106.9	40.2 - 42.1
6XL	107.0 - 111.9	42.2 - 44.1
7XL	112.0 - 116.9	44.1 - 46.0

### COLORS

Black - Cocoa - Beige



### IMPORTANT

Starting at size 2XL, there is an additional cost of £3.00 per size.





Hooks for 3  
adjust levels



Intimate  
closure



Material:



RealMax High-Technology Shaping Shorts with Premium Compression. Designed with advanced high-level compression, this garment refines the silhouette by providing firm control over the abdomen, waist, and thighs, achieving precise and even shaping in strategic areas

Level compression:



Control alto  
High control



High back with  
anatomical  
design



Maximum  
buttock lift



Silicone lace  
on thighs



Recommended  
uses:



Cosmetic surgery



Post surgery



Postpartum



Daily use

*CurveLux*  
By Lucy Castillo

REF / STYLE

RM01

**REAL MAX****SHAPING SHORTS WITH  
MAXIMUM CURVE**

CURVE MAX

*Double layer  
in the abdomen***AVAILABLE SIZES  
SIZE CHART**

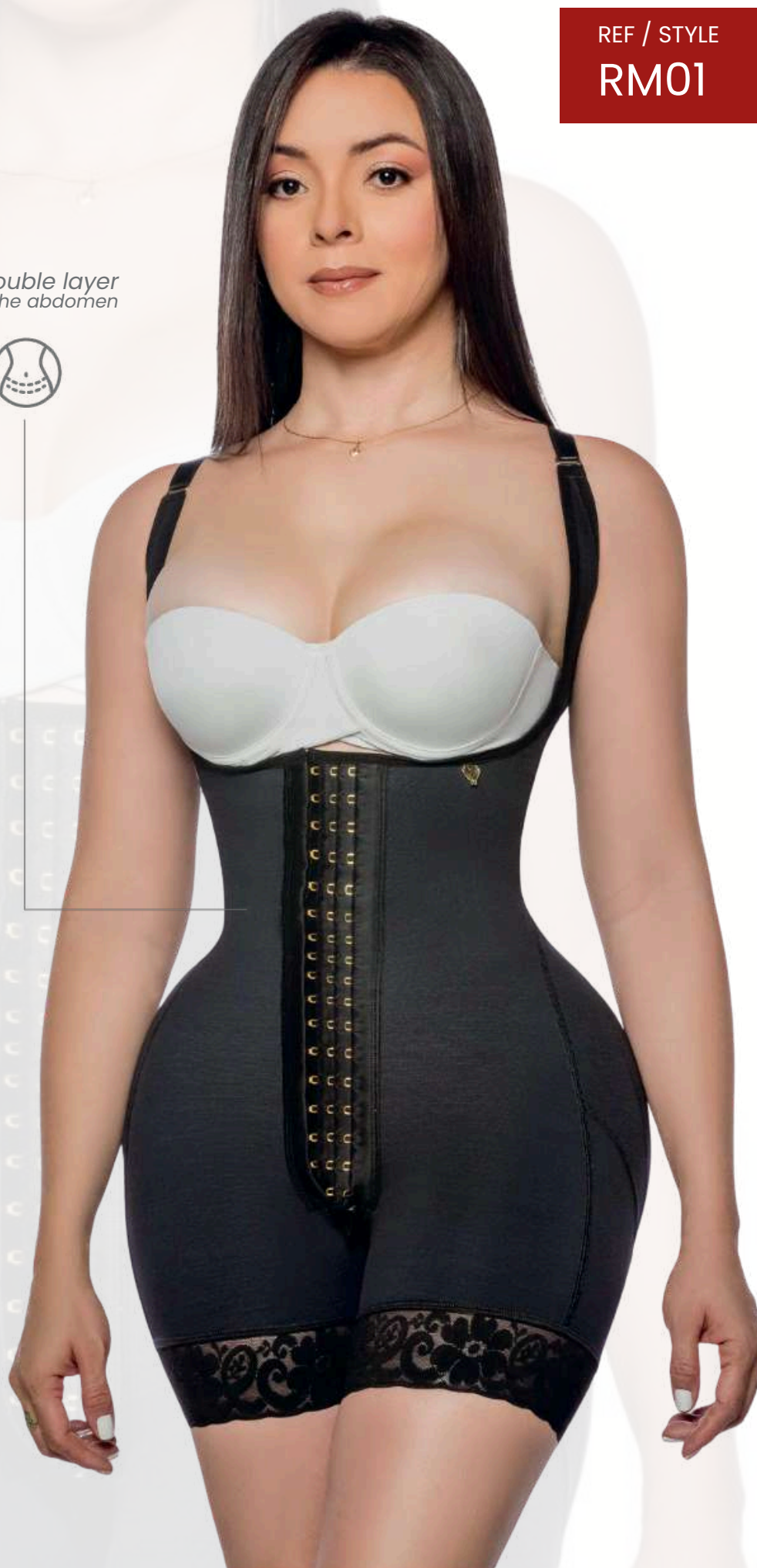
SIZES	WAIST (CM)	HIP (INCHES)
XS	62.0 - 66.9	24.4 - 26.3
S	67.0 - 71.9	26.4 - 28.3
M	72.0 - 76.9	28.3 - 30.3
L	77.0 - 81.9	30.3 - 32.2
XL	82.0 - 86.9	32.3 - 34.2
2XL	87.0 - 91.9	34.3 - 36.2
3XL	92.0 - 96.9	36.2 - 38.1
4XL	97.0 - 101.9	38.2 - 40.1
5XL	102.0 - 106.9	40.2 - 42.1
6XL	107.0 - 111.9	42.2 - 44.1
7XL	112.0 - 116.9	44.1 - 46.0

**COLORS**

Black - Cocoa - Beige

**IMPORTANT**

Starting at size 2XL, there is an additional cost of £3.00 per size.







Hooks for 3  
adjust levels

Intimate  
closure



Material:



RealMax High-  
Technology Shaping  
Shorts with Premium  
Compression. Designed  
with advanced high-  
level compression, this  
garment refines the  
silhouette by providing  
firm control over the  
abdomen, waist, and  
thighs, achieving  
precise and even  
shaping in strategic  
areas

Level compression:



Control alto  
High control

High back with  
anatomical design



Maximum  
buttock lift



Silicone lace  
on thighs



Recommended uses:



Cosmetic surgery



Post surgery



Postpartum



Daily use



*CurveLuxe*  
By Lucy Castillo

# REAL MAX

REF / STYLE  
RM11

## SHAPING SHORTS WITH SCULPTED CURVE

CURVE SCULPT

Double layer  
in the abdomen



### AVAILABLE SIZES SIZE CHART

SIZES	WAIST (CM)	HIP (INCHES)
XS	62.0 - 66.9	24.4 - 26.3
S	67.0 - 71.9	26.4 - 28.3
M	72.0 - 76.9	28.3 - 30.3
L	77.0 - 81.9	30.3 - 32.2
XL	82.0 - 86.9	32.3 - 34.2
2XL	87.0 - 91.9	34.3 - 36.2
3XL	92.0 - 96.9	36.2 - 38.1
4XL	97.0 - 101.9	38.2 - 40.1
5XL	102.0 - 106.9	40.2 - 42.1
6XL	107.0 - 111.9	42.2 - 44.1
7XL	112.0 - 116.9	44.1 - 46.0

### COLORS

Black - Cocoa - Beige



### IMPORTANT

Starting at size 2XL, there is an additional cost of £3.00 per size.





Hooks for 3  
adjust levels

1 2 3

Intimate  
closure



Material:



Medium-control  
shaping shorts with  
maximum buttock  
enhancement.  
Designed to sculpt the  
waist and define the  
silhouette with  
strategic support, while  
enhancing natural  
curves through its  
advanced lift system

Level compression:



Medium control

Recommended uses:



Cosmetic surgery



Post surgery



Postpartum



Daily use



Maximum  
buttock lift



Silicone lace  
on thighs



*CurveLuxe*  
By Lucy Castillo



# REAL MAX

REF / STYLE

107

## SHAPING SHORTS WITH FULL-BODY SILHOUETTE

SILHOUETTE BODY

double front  
reinforcement



Integrated  
bust design



### AVAILABLE SIZES SIZE CHART

SIZES	WAIST (CM)	HIP (INCHES)
XS	62.0 - 66.9	24.4 - 26.3
S	67.0 - 71.9	26.4 - 28.3
M	72.0 - 76.9	28.3 - 30.3
L	77.0 - 81.9	30.3 - 32.2
XL	82.0 - 86.9	32.3 - 34.2
2XL	87.0 - 91.9	34.3 - 36.2
3XL	92.0 - 96.9	36.2 - 38.1
4XL	97.0 - 101.9	38.2 - 40.1
5XL	102.0 - 106.9	40.2 - 42.1
6XL	107.0 - 111.9	42.2 - 44.1
7XL	112.0 - 116.9	44.1 - 46.0

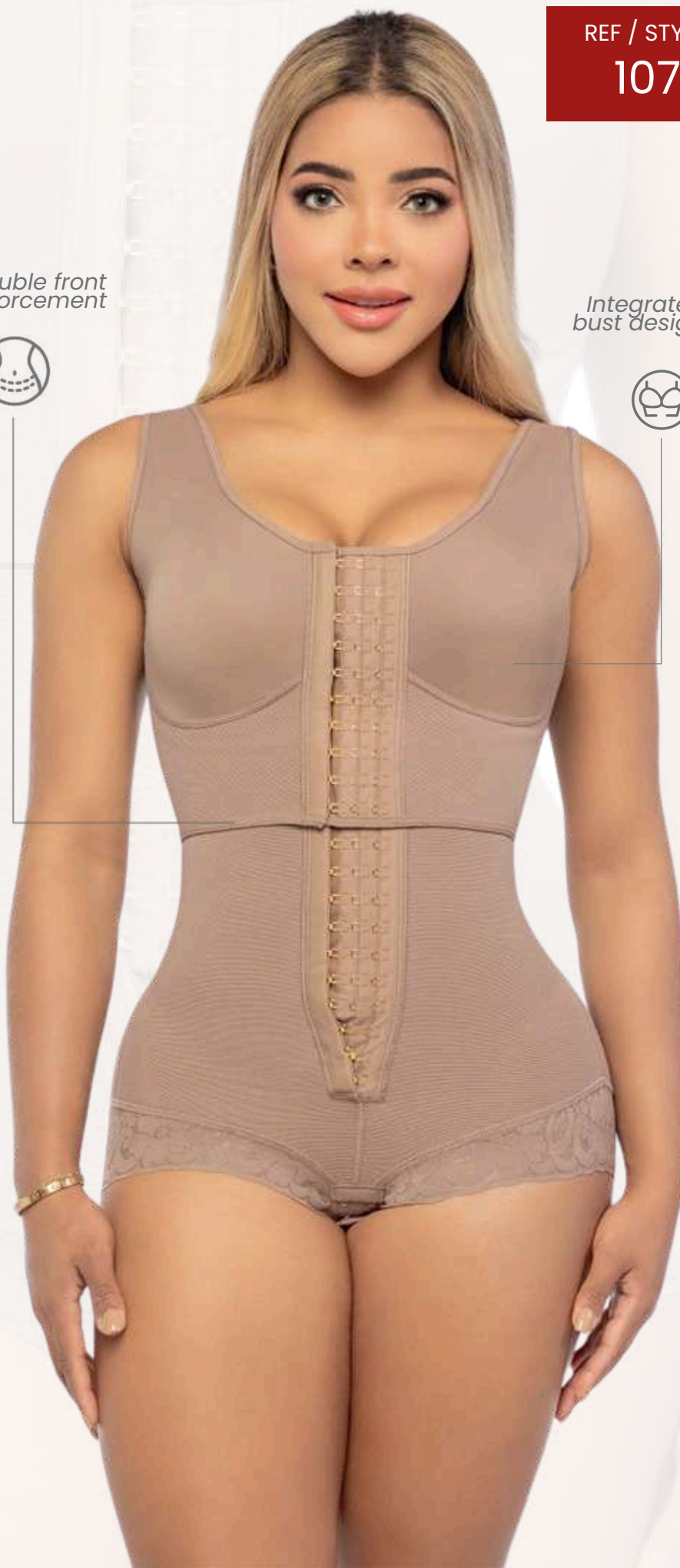
### COLORS

Black - Cocoa - Beige



### IMPORTANT

Starting at size 2XL, there is an additional cost of £3.00 per size.





*Hooks for 3  
adjust levels*



**Material:**



High-compression shapewear designed to sculpt and precisely define the abdomen, waist, and back. Features double front reinforcement and an internal and external hook system. Integrated bust design combines the benefits of a posture-correcting bra with the practicality of an everyday bodysuit

**Level compression:**



*Medium control*

*High back with  
anatomical design*



*Silicone lace  
on thighs*



*Maximum  
buttock lift*



**Recommended uses:**



*Cosmetic surgery*



*Post surgery*



*Postpartum*



*Daily use*



*CurveLux*  
By Lucy Castillo

# REAL MAX

REF / STYLE

107

## SHAPING SHORTS WITH LIFT

GODDESS LIFT

Wide seamless  
adjustable



double front  
reinforcement



### AVAILABLE SIZES SIZE CHART

SIZES	WAIST (CM)	HIP (INCHES)
XS	62.0 - 66.9	24.4 - 26.3
S	67.0 - 71.9	26.4 - 28.3
M	72.0 - 76.9	28.3 - 30.3
L	77.0 - 81.9	30.3 - 32.2
XL	82.0 - 86.9	32.3 - 34.2
2XL	87.0 - 91.9	34.3 - 36.2
3XL	92.0 - 96.9	36.2 - 38.1
4XL	97.0 - 101.9	38.2 - 40.1
5XL	102.0 - 106.9	40.2 - 42.1
6XL	107.0 - 111.9	42.2 - 44.1
7XL	112.0 - 116.9	44.1 - 46.0

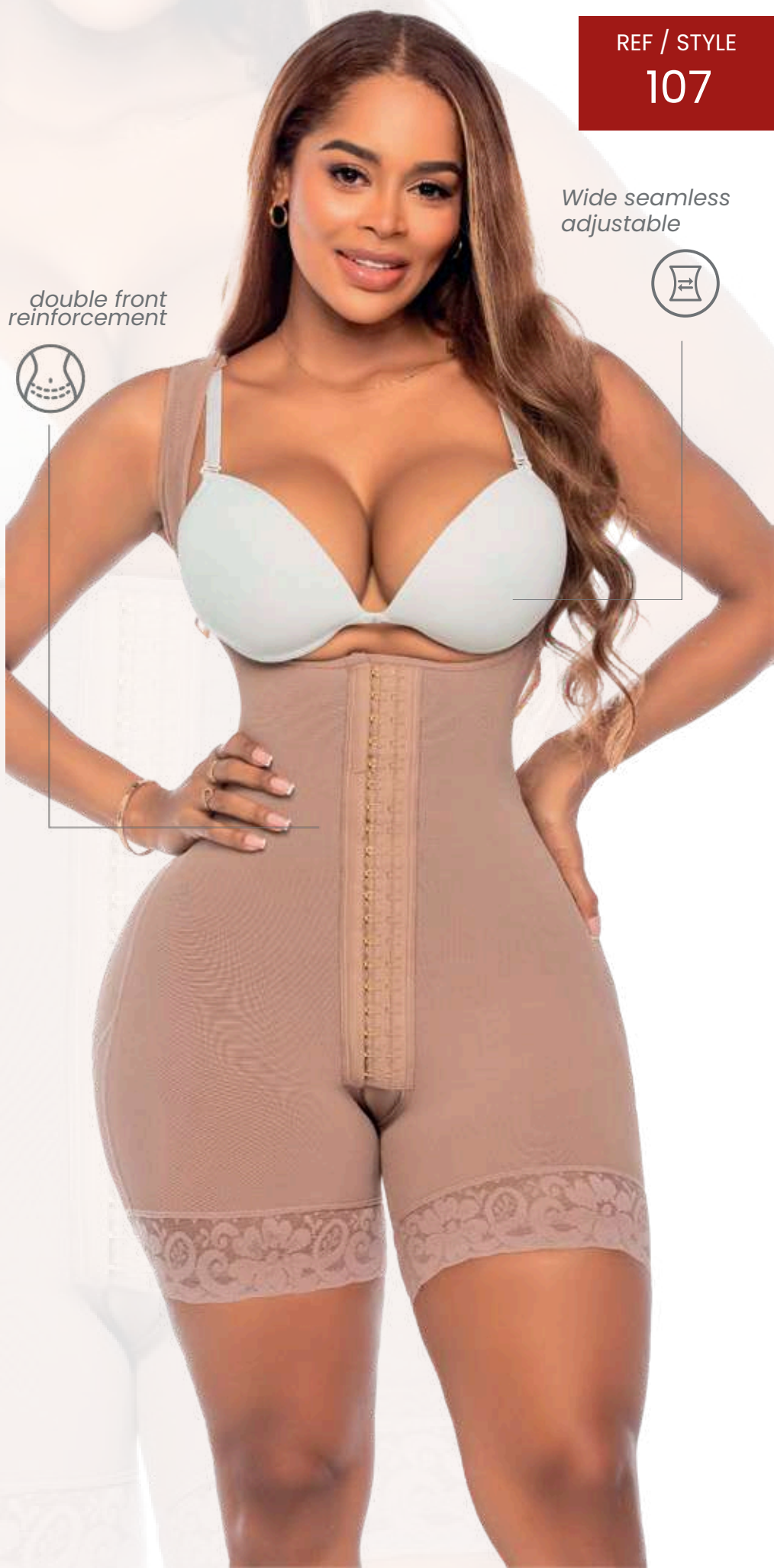
### COLORS

Black - Cocoa - Beige

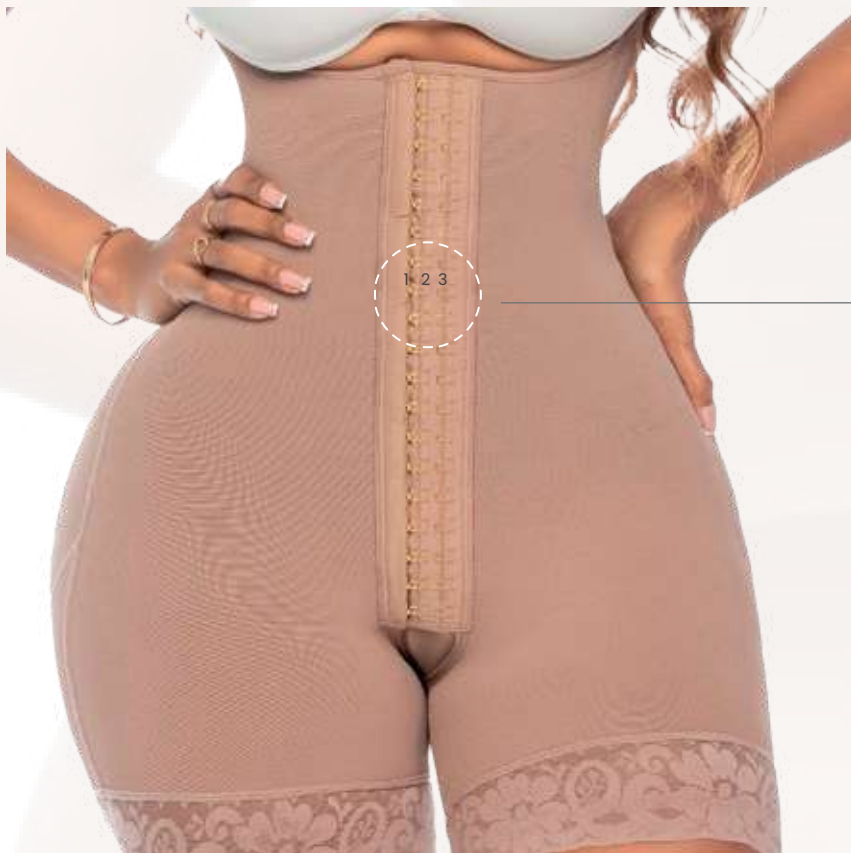


### IMPORTANT

Starting at size 2XL, there is an additional cost of £3.00 per size.







*Hooks for 3  
adjust levels*

**Material:**



Shaping shorts with abdominal reinforcement and maximum buttock enhancement. Designed to provide firm compression and accentuate the silhouette, ideal for daily or post-surgical use thanks to its practical and comfortable design. Short-style design: shapes the thighs and ensures a perfect fit all day long

*Level compression:*



Control alto  
High control

*Recommended uses:*



Cosmetic  
surgery



Post surgery



Postpartum



Daily use



*High back with  
anatomical design*



*Maximum  
buttock lift*



*Silicone lace  
on thighs*



*CurveLuxe*  
By Lucy Castillo





## **FLEXIBILITY, SUPERIOR SUPPORT, AND ULTRA-LIGHTWEIGHT DESIGN**

---

Developed with specialised ergonomic patterns for bodies with a narrow waist and wider hips. The intelligent adjustment system distributes compression strategically, enhancing curves and ensuring superior adaptability, whether for post-surgical recovery or to accentuate a naturally curvy figure





# Curvy

REF / STYLE

212

## LUXURY CURVES SHAPING SHORTS

CURVY LUXE

### AVAILABLE SIZES SIZE CHART

SIZES	WAIST (CM)	HIP (INCHES)
XS	62.0 - 66.9	24.4 - 26.3
S	67.0 - 71.9	26.4 - 28.3
M	72.0 - 76.9	28.3 - 30.3
L	77.0 - 81.9	30.3 - 32.2
XL	82.0 - 86.9	32.3 - 34.2
2XL	87.0 - 91.9	34.3 - 36.2
3XL	92.0 - 96.9	36.2 - 38.1
4XL	97.0 - 101.9	38.2 - 40.1
5XL	102.0 - 106.9	40.2 - 42.1
6XL	107.0 - 111.9	42.2 - 44.1
7XL	112.0 - 116.9	44.1 - 46.0

### COLORS

Black - Cocoa - Beige



### IMPORTANT

Starting at size 2XL, there is an additional cost of £3.00 per size.

Free  
bust  
design



Abdominal area with  
extra compression





*Slim, adjustable straps*



*Front zipper closure*



**Material:**



High-Technology Shapewear with Premium Compression. High compression: ideal for bodies with a small waist and pronounced hips. Special anatomical shaping: enhances buttocks and hips without flattening or over-compressing

*Level compression:*



*High control*

*Recommended uses:*



*Cosmetic surgery*



*Post surgery*



*Postpartum*



*Daily use*



*Reinforced mid-back*



*Maximum buttock lift*



*Silicone trim on legs*



*CurveLuxe*  
By Lucy Castillo



REF / STYLE  
CON07

Curvy

## MUSA SHAPING SHORTS WITH CURVES

CURVY MUSE

### AVAILABLE SIZES SIZE CHART

SIZES	WAIST (CM)	HIP (INCHES)
XS	62.0 - 66.9	24.4 - 26.3
S	67.0 - 71.9	26.4 - 28.3
M	72.0 - 76.9	28.3 - 30.3
L	77.0 - 81.9	30.3 - 32.2
XL	82.0 - 86.9	32.3 - 34.2
2XL	87.0 - 91.9	34.3 - 36.2
3XL	92.0 - 96.9	36.2 - 38.1
4XL	97.0 - 101.9	38.2 - 40.1
5XL	102.0 - 106.9	40.2 - 42.1
6XL	107.0 - 111.9	42.2 - 44.1
7XL	112.0 - 116.9	44.1 - 46.0

### COLORS

Black - Cocoa - Beige



### IMPORTANT

Starting at size 2XL, there is an additional cost of £3.00 per size.

Free  
bust design



Abdominal area with  
extra compression





Hooks for 3  
adjust levels

1 2 3

inner  
lining

Material:



High-Technology  
Shapewear with  
Premium Compression.  
High compression: ideal  
for bodies with a small  
waist and pronounced  
hips. Special  
anatomical shaping:  
enhances buttocks and  
hips without flattening  
or over-compressing

Level compression:



High control

Recommended uses:



Cosmetic surgery



Post surgery



Postpartum



Daily use



Reinforced  
mid-back



Maximum  
buttock lift



Silicone trim  
on legs



*CurveLux*  
By Lucy Castillo



# Seamless

## IMPERCEPTIBLE UNDER ANY GARMENT

---

Invisible high-tech compression garments, made from seamless, high-strength fabric that fits like a second skin. Their design minimises friction points and prevents marks under clothing, providing advanced shaping and natural enhancement with complete discretion.



*CurveLuxe*  
By Lucy Castillo



REF / STYLE

708

# Seamless

## INVISIBLE SHAPING SHORTS

### SEAMLESS SECRET

#### AVAILABLE SIZES SIZE CHART

SIZES	WAIST (CM)	HIP (INCHES)
XS	62.0 - 66.9	24.4 - 26.3
S	67.0 - 71.9	26.4 - 28.3
M	72.0 - 76.9	28.3 - 30.3
L	77.0 - 81.9	30.3 - 32.2
XL	82.0 - 86.9	32.3 - 34.2
2XL	87.0 - 91.9	34.3 - 36.2
3XL	92.0 - 96.9	36.2 - 38.1
4XL	97.0 - 101.9	38.2 - 40.1
5XL	102.0 - 106.9	40.2 - 42.1
6XL	107.0 - 111.9	42.2 - 44.1
7XL	112.0 - 116.9	44.1 - 46.0

#### COLORS

Black - Cocoa - Beige



#### IMPORTANT

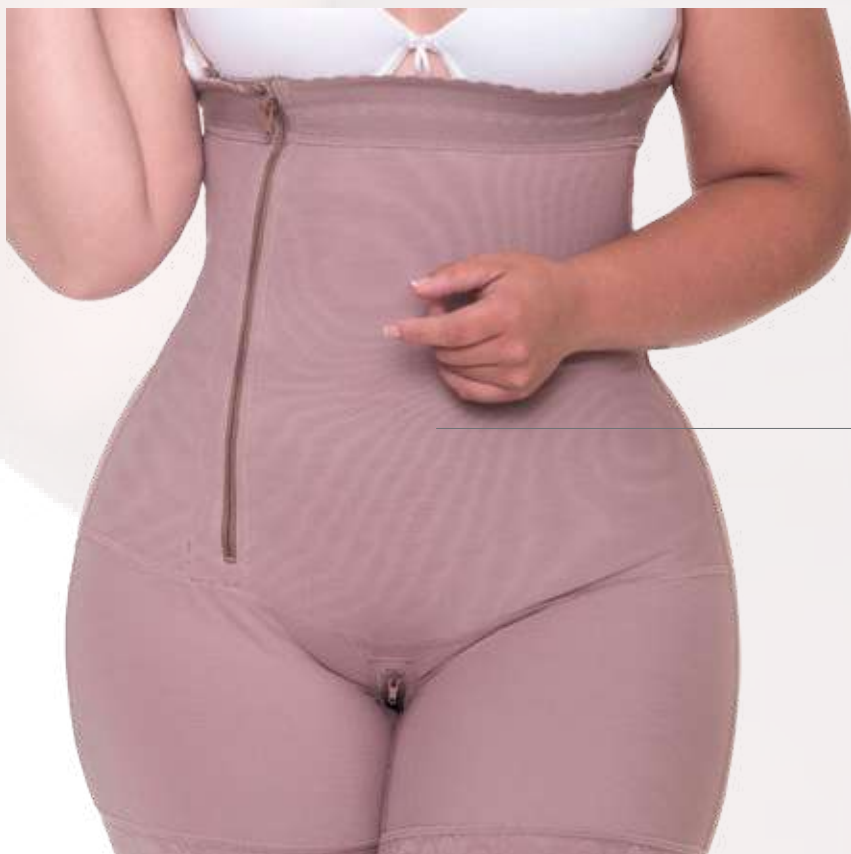
Starting at size 2XL, there is an additional cost of £3.00 per size.

*Slim,  
adjustable  
straps*



*Double layer  
in the abdomen*





*Invisible effect  
under clothing*



**Material:**



Invisible shaping shorts with abdominal reinforcement and maximum buttock enhancement. Designed to shape the silhouette naturally and discreetly, making them the perfect choice for wearing under dresses or fitted garments

*Level compression:*



*Firm control*

*Recommended uses:*



*Cosmetic surgery*



*Post surgery*



*Postpartum*



*Daily use*



*Maximum  
buttock lift*



*Non-slip  
lace*



*CurveLux*  
By Lucy Castillo

REF / STYLE  
INV01

# Seamless

## INVISIBLE FIT SHAPING SHORTS

INVISIBLE FIT

*Slim, adjustable  
straps*



*Free bust  
design*



### AVAILABLE SIZES SIZE CHART

SIZES	WAIST (CM)	HIP (INCHES)
XS	62.0 - 66.9	24.4 - 26.3
S	67.0 - 71.9	26.4 - 28.3
M	72.0 - 76.9	28.3 - 30.3
L	77.0 - 81.9	30.3 - 32.2
XL	82.0 - 86.9	32.3 - 34.2
2XL	87.0 - 91.9	34.3 - 36.2
3XL	92.0 - 96.9	36.2 - 38.1
4XL	97.0 - 101.9	38.2 - 40.1
5XL	102.0 - 106.9	40.2 - 42.1
6XL	107.0 - 111.9	42.2 - 44.1
7XL	112.0 - 116.9	44.1 - 46.0

### COLORS

Black - Cocoa - Beige

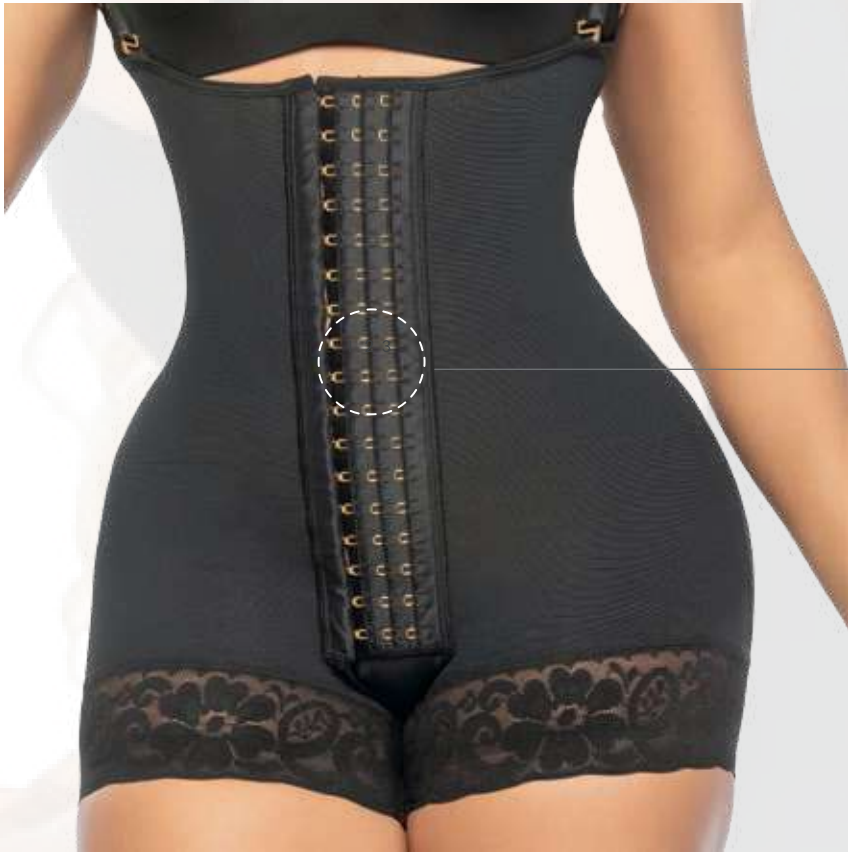


### IMPORTANT

Starting at size 2XL, there is an additional cost of £3.00 per size.







Hooks for 3  
adjust levels

Material:



High-compression  
shapewear,  
designed to define  
and streamline the  
waist, abdomen,  
and back with  
maximum  
effectiveness

Level compression:



High control

High back with  
anatomical design



Cosmetic  
surgery



Post surgery



Postpartum



Daily use

Maximum  
buttock lift



Silicone lace  
on thighs



*CurveLuxe*  
By Lucy Castillo



REF / STYLE

405

Seamless

## INVISIBLE SHAPING SHORTS

SHAPE BLOOM

Slim, adjustable  
strapsAVAILABLE SIZES  
SIZE CHART

SIZES	WAIST (CM)	HIP (INCHES)
XS	62.0 - 66.9	24.4 - 26.3
S	67.0 - 71.9	26.4 - 28.3
M	72.0 - 76.9	28.3 - 30.3
L	77.0 - 81.9	30.3 - 32.2
XL	82.0 - 86.9	32.3 - 34.2
2XL	87.0 - 91.9	34.3 - 36.2
3XL	92.0 - 96.9	36.2 - 38.1
4XL	97.0 - 101.9	38.2 - 40.1
5XL	102.0 - 106.9	40.2 - 42.1
6XL	107.0 - 111.9	42.2 - 44.1
7XL	112.0 - 116.9	44.1 - 46.0

## COLORS

Black - Cocoa - Beige



## IMPORTANT

Starting at size 2XL, there is an additional cost of £3.00 per size.





*Invisible seams  
and smooth finish*

*Intimate  
closure*



**Material:**



High-technology shapewear with premium compression that refines your figure with total control over the abdomen, waist, and back. High compression and anatomical shaping: defines the abdomen, waist, and back with maximum firmness

*Level compression:*



High control

*High back with  
anatomical design*



*Maximum  
buttock lift*



*Lace on  
the legs*



*Recommended uses:*



Cosmetic surgery



Post surgery



Postpartum



Daily use



*CurveLuxe*  
By Lucy Castillo



REF / STYLE  
INV09

# Seamless

## INVISIBLE SHAPING SHORTS

CORESHAPE

### AVAILABLE SIZES SIZE CHART

SIZES	WAIST (CM)	HIP (INCHES)
XS	62.0 - 66.9	24.4 - 26.3
S	67.0 - 71.9	26.4 - 28.3
M	72.0 - 76.9	28.3 - 30.3
L	77.0 - 81.9	30.3 - 32.2
XL	82.0 - 86.9	32.3 - 34.2
2XL	87.0 - 91.9	34.3 - 36.2
3XL	92.0 - 96.9	36.2 - 38.1
4XL	97.0 - 101.9	38.2 - 40.1
5XL	102.0 - 106.9	40.2 - 42.1
6XL	107.0 - 111.9	42.2 - 44.1
7XL	112.0 - 116.9	44.1 - 46.0

### COLORS

Black - Cocoa - Beige



### IMPORTANT

Starting at size 2XL, there is an additional cost of £3.00 per size.

Cool Lycra lining



Wide seamless straps





Hooks for 3  
adjust levels

1 2 3

Intimate  
closure



Material:



High-compression  
shapewear,  
designed to define  
and streamline  
the waist,  
abdomen, and  
back with  
maximum  
effectiveness

Level compression:



Control alto  
High control

High back with  
anatomical design



Recommended uses:



Cosmetic surgery



Post surgery



Postpartum



Daily use



Maximum  
buttock lift



Silicone lace  
on thighs



*CurveLux*  
By Lucy Castillo

REF / STYLE  
LC01

# Seamless

## INVISIBLE SHAPING SHORTS

SEAMGLAM FAJA

Integrated  
preformed  
cups



Slim, adjustable  
straps



### AVAILABLE SIZES SIZE CHART

SIZES	WAIST (CM)	HIP (INCHES)
XS	62.0 - 66.9	24.4 - 26.3
S	67.0 - 71.9	26.4 - 28.3
M	72.0 - 76.9	28.3 - 30.3
L	77.0 - 81.9	30.3 - 32.2
XL	82.0 - 86.9	32.3 - 34.2
2XL	87.0 - 91.9	34.3 - 36.2
3XL	92.0 - 96.9	36.2 - 38.1
4XL	97.0 - 101.9	38.2 - 40.1
5XL	102.0 - 106.9	40.2 - 42.1
6XL	107.0 - 111.9	42.2 - 44.1
7XL	112.0 - 116.9	44.1 - 46.0

### COLORS

Black - Cocoa - Beige



### IMPORTANT

Starting at size 2XL, there is an additional cost of £3.00 per size.







Seamless design

Smart compression stretch fabric

Material:



High-technology shapewear with premium compression: precisely sculpts the abdomen, waist, thighs, and lower back, achieving a streamlined silhouette without compromising comfort.

Level compression:



Firm control



High back with anatomical design



Maximum buttock lift



Lace on the legs



Recommended uses:



Cosmetic surgery



Post surgery



Postpartum



Daily use

*CurveLuxe*  
By Lucy Castillo

# Seamless

REF / STYLE  
**RAL03**

## Invisible Shaping Shorts

**LYCRA CONTROL FIT**

### AVAILABLE SIZES SIZE CHART

SIZES	WAIST (CM)	HIP (INCHES)
XS	62.0 - 66.9	24.4 - 26.3
S	67.0 - 71.9	26.4 - 28.3
M	72.0 - 76.9	28.3 - 30.3
L	77.0 - 81.9	30.3 - 32.2
XL	82.0 - 86.9	32.3 - 34.2
2XL	87.0 - 91.9	34.3 - 36.2
3XL	92.0 - 96.9	36.2 - 38.1
4XL	97.0 - 101.9	38.2 - 40.1
5XL	102.0 - 106.9	40.2 - 42.1
6XL	107.0 - 111.9	42.2 - 44.1
7XL	112.0 - 116.9	44.1 - 46.0

### COLORS

Black - Cocoa - Beige



### IMPORTANT

Starting at size 2XL, there is an additional cost of £3.00 per size.

Free  
bust  
design



Wide  
adjustable  
straps



Double  
layer  
in the  
abdomen





Hooks for 3  
adjust levels



Cool Lycra  
lining



Material:



Long lycra control shaping shorts with abdominal reinforcement and natural buttock enhancement. Designed to provide effective control and maximum comfort, ideal for daily wear or as a lightweight post-surgical aid.

Level compression:



4 High control

Recommended uses:



Cosmetic surgery



Post surgery



Postpartum



Daily use



High back with  
anatomical design



Maximum  
buttock lift



Lace on  
the legs



*CurveLuxe*  
By Lucy Castillo







# Reloj de Arenas

## THE PERFECT BALANCE TO ENHANCE YOUR CURVES

---

Designed with directional compression engineering to focus control on the central torso, sculpting and accentuating the waist. Ideal for hourglass figures or post-surgical use, it provides lumbar support and precise definition with extended comfort



*CurveLuxe*  
By Lucy Castillo

REF / STYLE

813

# Reloj de Arenas

## EXTREME VEST

### AVAILABLE SIZES SIZE CHART

SIZES	WAIST (CM)	HIP (INCHES)
XS	62.0 - 66.9	24.4 - 26.3
S	67.0 - 71.9	26.4 - 28.3
M	72.0 - 76.9	28.3 - 30.3
L	77.0 - 81.9	30.3 - 32.2
XL	82.0 - 86.9	32.3 - 34.2
2XL	87.0 - 91.9	34.3 - 36.2
3XL	92.0 - 96.9	36.2 - 38.1
4XL	97.0 - 101.9	38.2 - 40.1
5XL	102.0 - 106.9	40.2 - 42.1
6XL	107.0 - 111.9	42.2 - 44.1
7XL	112.0 - 116.9	44.1 - 46.0

Free  
bust design



Wide adjustable  
straps

### COLORS

Black - Cocoa - Beige



### IMPORTANT

Starting at size 2XL, there is an additional cost of £3.00 per size.





Front zipper closure



15 Internal lateral reinforcement rods



Material:



High-compression shapewear designed to provide advanced control and precise shaping of the abdomen, waist, and lower back

Level compression:



High control

Recommended uses:



Post surgery



Postpartum



Daily use

High back with structural reinforcement



*CurveLuxe*  
By Lucy Castillo

REF / STYLE

RA15

# Reloj de Arenalllll

## PERFECT FIT VEST

integrated  
preformed cups



Wide  
adjustable  
straps



### AVAILABLE SIZES SIZE CHART

SIZES	WAIST (CM)	HIP (INCHES)
XS	62.0 - 66.9	24.4 - 26.3
S	67.0 - 71.9	26.4 - 28.3
M	72.0 - 76.9	28.3 - 30.3
L	77.0 - 81.9	30.3 - 32.2
XL	82.0 - 86.9	32.3 - 34.2
2XL	87.0 - 91.9	34.3 - 36.2
3XL	92.0 - 96.9	36.2 - 38.1
4XL	97.0 - 101.9	38.2 - 40.1
5XL	102.0 - 106.9	40.2 - 42.1
6XL	107.0 - 111.9	42.2 - 44.1
7XL	112.0 - 116.9	44.1 - 46.0

### COLORS

Black - Cocoa - Beige



### IMPORTANT

Starting at size 2XL, there is an additional cost of £3.00 per size.





*Dual-adjustment  
front system:  
external zipper  
with hidden  
internal hooks*

Material:



High-compression  
shapewear designed  
to provide advanced  
control and precise  
shaping of the  
abdomen, waist, and  
lower back

*Curved  
lower base*



*Level compression:*



High control

*Recommended uses:*



Post surgery



Postpartum



Daily use



*High back with  
structural  
reinforcement*



*15 Internal lateral  
reinforcement rods*



REF / STYLE

812

# Reloj de Arenalllll

## EXTREME WAIST CINCHER

Soft inner  
lining

### AVAILABLE SIZES SIZE CHART

SIZES	WAIST (CM)	HIP (INCHES)
XS	62.0 - 66.9	24.4 - 26.3
S	67.0 - 71.9	26.4 - 28.3
M	72.0 - 76.9	28.3 - 30.3
L	77.0 - 81.9	30.3 - 32.2
XL	82.0 - 86.9	32.3 - 34.2
2XL	87.0 - 91.9	34.3 - 36.2
3XL	92.0 - 96.9	36.2 - 38.1
4XL	97.0 - 101.9	38.2 - 40.1
5XL	102.0 - 106.9	40.2 - 42.1
6XL	107.0 - 111.9	42.2 - 44.1
7XL	112.0 - 116.9	44.1 - 46.0

### COLORS

Black - Cocoa - Beige



### IMPORTANT

Starting at size 2XL, there is an additional cost of £3.00 per size.





Dual-  
adjustment  
front system:  
external zipper  
with hidden  
internal hooks

Material:



High-Compression  
Shapewear: defines  
the waist, abdomen,  
and back with  
maximum control

Curved  
lower base



Level compression:



High control

Recommended uses:



Post surgery



Postpartum



Daily use

15 Internal lateral  
reinforcement rods



Reloj de  
Arenalll

REF / STYLE

RA04

## CURVE POWER WAIST CINCHER

CINTURILLA POWER CURVE

15 Internal lateral  
reinforcement rods



### AVAILABLE SIZES SIZE CHART

SIZES	WAIST (CM)	HIP (INCHES)
XS	62.0 - 66.9	24.4 - 26.3
S	67.0 - 71.9	26.4 - 28.3
M	72.0 - 76.9	28.3 - 30.3
L	77.0 - 81.9	30.3 - 32.2
XL	82.0 - 86.9	32.3 - 34.2
2XL	87.0 - 91.9	34.3 - 36.2
3XL	92.0 - 96.9	36.2 - 38.1
4XL	97.0 - 101.9	38.2 - 40.1
5XL	102.0 - 106.9	40.2 - 42.1
6XL	107.0 - 111.9	42.2 - 44.1
7XL	112.0 - 116.9	44.1 - 46.0

### COLORS

Black - Cocoa - Beige



### IMPORTANT

Starting at size 2XL, there is an additional cost of £3.00 per size.





*Dual-  
adjustment  
front system:  
external zipper  
with hidden  
internal hooks*

*Curved  
lower base*



*High back with  
structural  
reinforcement*



**Material:**



Advanced high-level compression shapewear: strategically defines and sculpts the abdomen, waist, and back, creating a firmer, more slender silhouette.

**Level compression:**



High control

**Recommended uses:**



Post surgery



Postpartum



Daily use

REF / STYLE

210

# Reloj de Arenalll

## HOURGLASS SHAPEWEAR WITH ADJUSTABLE STRAPS

### AVAILABLE SIZES SIZE CHART

SIZES	WAIST (CM)	HIP (INCHES)
XS	62.0 - 66.9	24.4 - 26.3
S	67.0 - 71.9	26.4 - 28.3
M	72.0 - 76.9	28.3 - 30.3
L	77.0 - 81.9	30.3 - 32.2
XL	82.0 - 86.9	32.3 - 34.2
2XL	87.0 - 91.9	34.3 - 36.2
3XL	92.0 - 96.9	36.2 - 38.1
4XL	97.0 - 101.9	38.2 - 40.1
5XL	102.0 - 106.9	40.2 - 42.1
6XL	107.0 - 111.9	42.2 - 44.1
7XL	112.0 - 116.9	44.1 - 46.0

### COLORS

Black - Cocoa - Beige



### IMPORTANT

Starting at size 2XL, there is an additional cost of £3.00 per size.

Slim,  
adjustable  
straps



Free  
bust  
design





Dual-adjustment  
front system:  
external zipper  
with hidden  
internal hooks

Intimate  
closure



Material:



Advanced high-level  
compression  
shapewear: sculpts  
the waist, defines the  
abdomen,  
streamlines the back,  
and enhances curves  
with maximum  
firmness without  
sacrificing comfort

Level compression:



High control

Recommended uses:



Post surgery



Postpartum



Daily use



High  
coverage  
back



Maximum  
buttock lift



Silicone trim  
on legs



*CurveLuxe*  
By Lucy Castillo



REF / STYLE  
RA03

Reloj de  
Arenalll

## HOURGLASS SHAPER WITH ADJUSTABLE STRAPS

HOURGLASS FIT

### AVAILABLE SIZES SIZE CHART

SIZES	WAIST (CM)	HIP (INCHES)
XS	62.0 - 66.9	24.4 - 26.3
S	67.0 - 71.9	26.4 - 28.3
M	72.0 - 76.9	28.3 - 30.3
L	77.0 - 81.9	30.3 - 32.2
XL	82.0 - 86.9	32.3 - 34.2
2XL	87.0 - 91.9	34.3 - 36.2
3XL	92.0 - 96.9	36.2 - 38.1
4XL	97.0 - 101.9	38.2 - 40.1
5XL	102.0 - 106.9	40.2 - 42.1
6XL	107.0 - 111.9	42.2 - 44.1
7XL	112.0 - 116.9	44.1 - 46.0

### COLORS

Black - Cocoa - Beige



### IMPORTANT

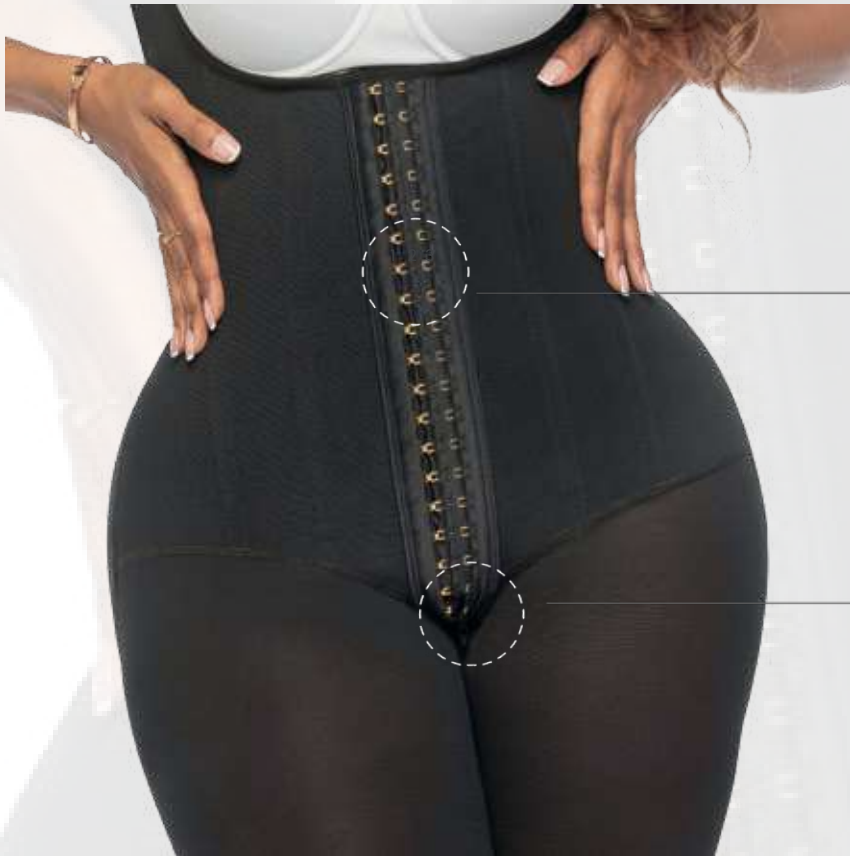
Starting at size 2XL, there is an additional cost of £3.00 per size.

Wide  
adjustable  
straps



9 Internal lateral  
reinforcement rods





*Hooks for 3  
adjust levels*

*Intimate  
closure*



**Material:**



Advanced high-level compression shapewear: designed to create a more defined waist and a streamlined silhouette, providing maximum control over the abdomen, waist, and back with complete comfort for daily or post-surgical use.

*Level compression:*



High control

*High coverage  
back*



*Recommended uses:*



Post surgery



Postpartum



Daily use

*Maximum  
buttock lift*



*Non-slip  
lace*



*CurveLux*  
By Lucy Castillo







## INSTANTLY SLIM YOUR WAIST

---

Shapewear and sports garments made from certified thermal fabrics that increase perspiration and enhance physical performance. They feature muscle support panels and strategic compression to optimise training, promoting shaping and active recovery



REF / STYLE

807

**SPORTS WAIST TRAINER**

POWERVEST

*Free bust design**Ergonomic and wide straps***AVAILABLE SIZES  
SIZE CHART**

SIZES	WAIST (CM)	HIP (INCHES)
XS	62.0 - 66.9	24.4 - 26.3
S	67.0 - 71.9	26.4 - 28.3
M	72.0 - 76.9	28.3 - 30.3
L	77.0 - 81.9	30.3 - 32.2
XL	82.0 - 86.9	32.3 - 34.2
2XL	87.0 - 91.9	34.3 - 36.2
3XL	92.0 - 96.9	36.2 - 38.1
4XL	97.0 - 101.9	38.2 - 40.1
5XL	102.0 - 106.9	40.2 - 42.1
6XL	107.0 - 111.9	42.2 - 44.1
7XL	112.0 - 116.9	44.1 - 46.0

**COLORS**

- Black
- Fuchsia
- Purple
- Blue

**IMPORTANT**

Starting at size 2XL, there is an additional cost of £3.00 per size.





Hooks for 3  
adjust levels

Thermal  
material



Material:



High- and firm-  
compression  
sports shapewear:  
instantly sculpts  
the waist and  
abdomen,  
creating a defined  
silhouette even  
during physical  
activity

Level compression:



4 High control

Usos recomendados  
Recommended uses:



Exercise



3 Increase  
sweating



Daily use

High back with  
structural  
reinforcement



Curved  
lower base







Internal structure with  
9 flexible metal rods



## SPORTS WAIST CINCHER

POWERVEST

### AVAILABLE SIZES SIZE CHART

SIZES	WAIST (CM)	HIP (INCHES)
XS	62.0 - 66.9	24.4 - 26.3
S	67.0 - 71.9	26.4 - 28.3
M	72.0 - 76.9	28.3 - 30.3
L	77.0 - 81.9	30.3 - 32.2
XL	82.0 - 86.9	32.3 - 34.2
2XL	87.0 - 91.9	34.3 - 36.2
3XL	92.0 - 96.9	36.2 - 38.1
4XL	97.0 - 101.9	38.2 - 40.1
5XL	102.0 - 106.9	40.2 - 42.1
6XL	107.0 - 111.9	42.2 - 44.1
7XL	112.0 - 116.9	44.1 - 46.0

### COLORS

- Black
- Fuchsia
- Purple
- Blue

### IMPORTANT

Starting at size 2XL, there is an additional cost of £3.00 per size.





Hooks for 3  
adjust levels

Material:



High-compression sports shapewear: defines the abdomen and waist with maximum control, ideal for shaping the silhouette during workouts or daily wear

Level compression:



High control

Recommended uses:



Exercise



Increase sweating



Daily use



Lower back



REF / STYLE  
**FITO**



Internal structure  
with  
flexible metal rods



## SPORTS WAIST BELT

### POWERCORE

#### AVAILABLE SIZES

#### SIZE CHART

SIZES	WAIST (CM)	HIP (INCHES)
XS	62.0 - 66.9	24.4 - 26.3
S	67.0 - 71.9	26.4 - 28.3
M	72.0 - 76.9	28.3 - 30.3
L	77.0 - 81.9	30.3 - 32.2
XL	82.0 - 86.9	32.3 - 34.2
2XL	87.0 - 91.9	34.3 - 36.2
3XL	92.0 - 96.9	36.2 - 38.1
4XL	97.0 - 101.9	38.2 - 40.1
5XL	102.0 - 106.9	40.2 - 42.1
6XL	107.0 - 111.9	42.2 - 44.1
7XL	112.0 - 116.9	44.1 - 46.0

#### COLORS

Black - Cocoa - Beige



#### IMPORTANT

Starting at size 2XL, there is an additional cost of £3.00 per size.







double  
adjustment  
strap with  
Velcro



Material:



High-performance  
firm-compression  
sports shapewear:  
sculpts and  
defines the waist,  
abdomen, and  
back with  
strategic support,  
ideal for workouts  
or everyday wear



High back with  
structural  
reinforcement



Level compression:



High control

Recommended uses:



Exercise



Increase  
sweating



Daily use

anatomical  
waistband  
type

REF / STYLE  
LF03



15 Internal  
lateral  
reinforcement  
rods



## SPORTS WAIST BELT

GLAMFIT

### AVAILABLE SIZES SIZE CHART

SIZES	WAIST (CM)	HIP (INCHES)
XS	62.0 - 66.9	24.4 - 26.3
S	67.0 - 71.9	26.4 - 28.3
M	72.0 - 76.9	28.3 - 30.3
L	77.0 - 81.9	30.3 - 32.2
XL	82.0 - 86.9	32.3 - 34.2
2XL	87.0 - 91.9	34.3 - 36.2
3XL	92.0 - 96.9	36.2 - 38.1
4XL	97.0 - 101.9	38.2 - 40.1
5XL	102.0 - 106.9	40.2 - 42.1
6XL	107.0 - 111.9	42.2 - 44.1
7XL	112.0 - 116.9	44.1 - 46.0

### COLORS

Black - Cocoa - Beige



### IMPORTANT

Starting at size 2XL, there is an additional cost of £3.00 per size.





Hooks for 3  
adjust levels

Material:



High-performance  
firm-compression  
sports shapewear:  
sculpts and  
defines the waist,  
abdomen, and  
back with  
strategic support,  
ideal for training or  
everyday wear

Level compression:



4 High control

Recommended uses:



Exercise



Increase  
sweating



Daily use



High back with  
structural  
reinforcement



anatomical  
waistband  
type





# FASHION

## HIGH-CONTROL GARMENTS TO SHAPE YOUR FIGURE

---

Shaping garments with a high-impact exterior design. Crafted from intelligent materials that combine shaping and style, they integrate effortlessly into any outfit as bodysuits, tops, or blouses, seamlessly blending functionality and fashion



*CurveLuxe*  
By Lucy Castillo

REF / STYLE  
105C

# FASHION

## SHAPING BODYSUIT FITGLAMBODY

Fixed and  
anatomical  
braces



integrated  
preformed cups



### AVAILABLE SIZES SIZE CHART

SIZES	WAIST (CM)	HIP (INCHES)
XS	62.0 - 66.9	24.4 - 26.3
S	67.0 - 71.9	26.4 - 28.3
M	72.0 - 76.9	28.3 - 30.3
L	77.0 - 81.9	30.3 - 32.2
XL	82.0 - 86.9	32.3 - 34.2
2XL	87.0 - 91.9	34.3 - 36.2
3XL	92.0 - 96.9	36.2 - 38.1
4XL	97.0 - 101.9	38.2 - 40.1
5XL	102.0 - 106.9	40.2 - 42.1
6XL	107.0 - 111.9	42.2 - 44.1
7XL	112.0 - 116.9	44.1 - 46.0

### COLORS

Black - Cocoa - Beige



### IMPORTANT

Starting at size 2XL, there is an additional cost of £3.00 per size.







Double structured  
front reinforcement

Material:



High-technology  
shapewear with  
premium, advanced  
high-level compression:  
strategically defines  
and streamlines the  
abdominal area, waist,  
and back, sculpting the  
silhouette with precision

Intimate  
opening with  
clasp



Level compression:



High control



High back with  
anatomical design



Maximum  
buttock lift



Lace on  
the legs



Recommended uses:



Cosmetic surgery



Post surgery



Postpartum



Daily use

REF / STYLE

815

FASHION

VEST

COREFIT

Slim,  
adjustable  
strapsIntegrated  
preformed  
cupsAVAILABLE SIZES  
SIZE CHART

SIZES	WAIST (CM)	HIP (INCHES)
XS	62.0 - 66.9	24.4 - 26.3
S	67.0 - 71.9	26.4 - 28.3
M	72.0 - 76.9	28.3 - 30.3
L	77.0 - 81.9	30.3 - 32.2
XL	82.0 - 86.9	32.3 - 34.2
2XL	87.0 - 91.9	34.3 - 36.2
3XL	92.0 - 96.9	36.2 - 38.1
4XL	97.0 - 101.9	38.2 - 40.1
5XL	102.0 - 106.9	40.2 - 42.1
6XL	107.0 - 111.9	42.2 - 44.1
7XL	112.0 - 116.9	44.1 - 46.0

## COLORS

Black - Cocoa - Beige



## IMPORTANT

Starting at size 2XL, there is an additional cost of £3.00 per size.





Double structured  
front reinforcement

Material:



High-compression shapewear with advanced technology: precisely sculpts and defines the abdomen, waist, and back, streamlining the silhouette from the very first wear

15 Internal lateral  
reinforcement rods



Level compression:



High control



High back with  
structural  
reinforcement



Recommended uses:



Cosmetic surgery



Post surgery



Postpartum



Daily use

Curved  
lower base





REF / STYLE

L112

FASHION

Double layer  
in the  
abdomen



## LEGGINGS

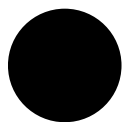
## TOTAL CONTROL LEGGINGS

AVAILABLE SIZES  
SIZE CHART

SIZES	WAIST (CM)	HIP (INCHES)
XS	62.0 - 66.9	24.4 - 26.3
S	67.0 - 71.9	26.4 - 28.3
M	72.0 - 76.9	28.3 - 30.3
L	77.0 - 81.9	30.3 - 32.2
XL	82.0 - 86.9	32.3 - 34.2
2XL	87.0 - 91.9	34.3 - 36.2
3XL	92.0 - 96.9	36.2 - 38.1
4XL	97.0 - 101.9	38.2 - 40.1
5XL	102.0 - 106.9	40.2 - 42.1
6XL	107.0 - 111.9	42.2 - 44.1
7XL	112.0 - 116.9	44.1 - 46.0

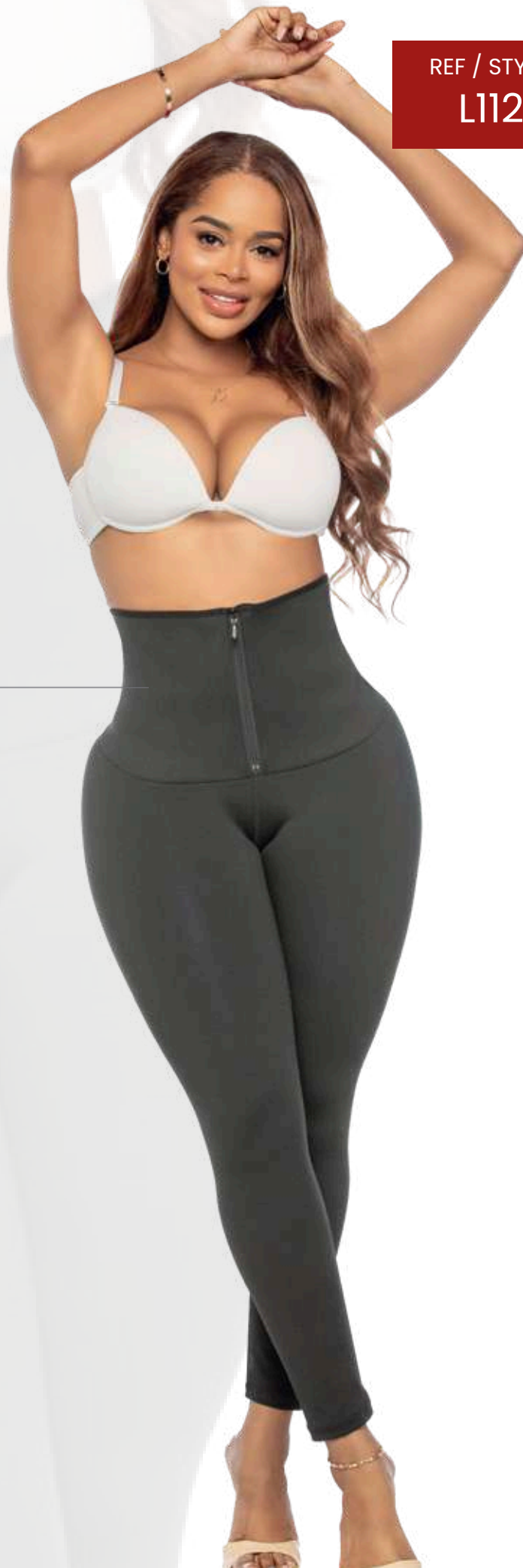
## COLORS

Black



## IMPORTANT

Starting at size 2XL, there is an additional cost of £3.00 per size.





Front zipper closure



#### Material:



Everyday leggings with a slimming effect and natural enhancement. Designed to streamline the figure in the abdominal and hip areas, they provide firm control and maximum buttock enhancement, combining comfort and aesthetics in a single design

#### Level compression:



High control



High-waisted design

Maximum buttock lift



#### Recommended uses:



Exercise



Increase sweating



Daily use







**+ Posquirúrgica**

## **PRECISION COMPRESSION GARMENTS FOR OPTIMAL RECOVERY**

---

Certified medical compression garments, made from hypoallergenic textiles and advanced recovery technology. Designed to optimise the healing process, reduce inflammation, and maintain the desired shape, they feature flat seams and ergonomic fastenings that facilitate everyday post-operative wear.



*CurveLuxe*  
By Lucy Castillo

REF / STYLE  
POS07

 **Posquirúrgica**

**POST-OPERATIVE SHAPEWEAR**  
**RECOVERY FIT**

**AVAILABLE SIZES**  
**SIZE CHART**

SIZES	WAIST (CM)	HIP (INCHES)
XS	62.0 - 66.9	24.4 - 26.3
S	67.0 - 71.9	26.4 - 28.3
M	72.0 - 76.9	28.3 - 30.3
L	77.0 - 81.9	30.3 - 32.2
XL	82.0 - 86.9	32.3 - 34.2
2XL	87.0 - 91.9	34.3 - 36.2
3XL	92.0 - 96.9	36.2 - 38.1
4XL	97.0 - 101.9	38.2 - 40.1
5XL	102.0 - 106.9	40.2 - 42.1
6XL	107.0 - 111.9	42.2 - 44.1
7XL	112.0 - 116.9	44.1 - 46.0

**COLORS**

Black - Cocoa - Beige



**IMPORTANT**

Starting at size 2XL, there is an additional cost of £3.00 per size.

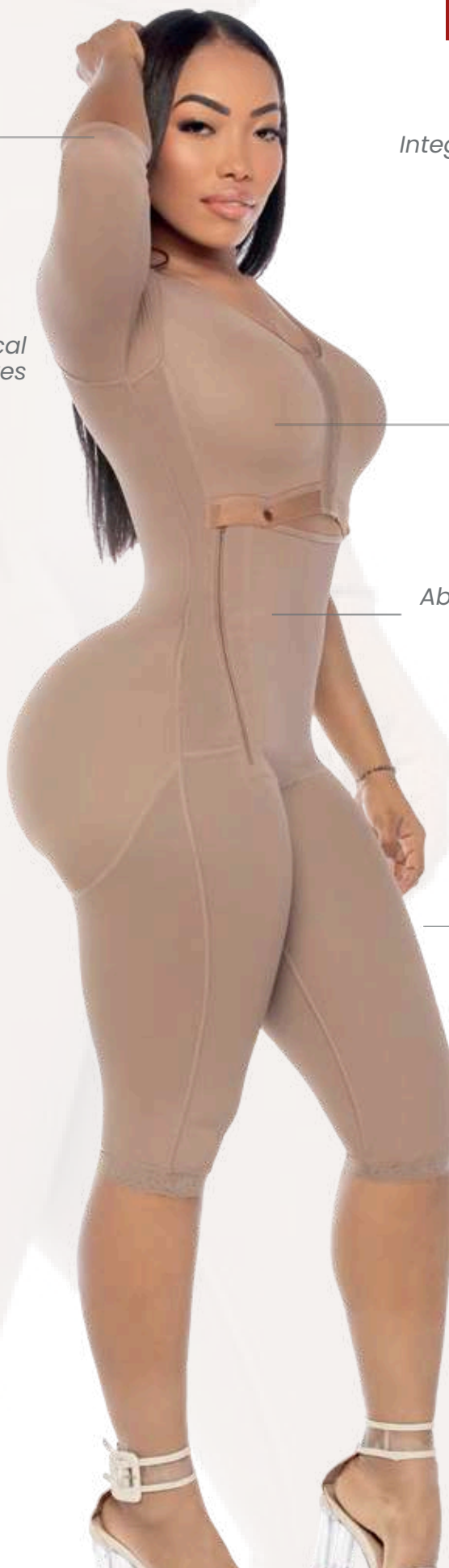
Post-surgical sleeves



Integrated bra



Abdominal and leg control





*Side closure with  
internal clasps*



*Intimate  
opening with  
clasp*



**Material:**



Long post-surgical  
shapewear with  
sleeves and  
integrated bra.  
Specially designed for  
aesthetic recovery  
processes, providing  
control, support, and  
comfort at every  
stage

*Level compression:*



High control

*High back with  
anatomical design*



*Recommended uses:*



Cosmetic surgery



Post surgery



Postpartum



Daily use

*Maximum  
buttock lift*





REF / STYLE  
215-1

 **Posquirúrgica**

## POST-OPERATIVE SHAPEWEAR

### AVAILABLE SIZES SIZE CHART

SIZES	WAIST (CM)	HIP (INCHES)
XS	62.0 - 66.9	24.4 - 26.3
S	67.0 - 71.9	26.4 - 28.3
M	72.0 - 76.9	28.3 - 30.3
L	77.0 - 81.9	30.3 - 32.2
XL	82.0 - 86.9	32.3 - 34.2
2XL	87.0 - 91.9	34.3 - 36.2
3XL	92.0 - 96.9	36.2 - 38.1
4XL	97.0 - 101.9	38.2 - 40.1
5XL	102.0 - 106.9	40.2 - 42.1
6XL	107.0 - 111.9	42.2 - 44.1
7XL	112.0 - 116.9	44.1 - 46.0

### COLORS

Black - Cocoa - Beige



### IMPORTANT

Starting at size 2XL, there is an additional cost of £3.00 per size.

Integrated  
preformed cups



Long leg up  
to the knee





*Hooks for 3  
adjust levels*

*Intimate  
closure*



**Material:**



High-Technology Shapewear with Premium Compression. Specially designed to enhance and streamline the curvy silhouette, it provides firm control over the abdomen and waist with maximum comfort and support.

**Level compression:**



High control

**Recommended uses:**



Cosmetic surgery



Post surgery



Postpartum



Daily use



*High back with  
anatomical design*



*Maximum  
buttock lift*



REF / STYLE

222



Post-surgical  
sleeves

Integrated bra

## POST-OPERATIVE SHAPEWEAR

### RECOVERY ELEGANCE

#### AVAILABLE SIZES

#### SIZE CHART

SIZES	WAIST (CM)	HIP (INCHES)
XS	62.0 - 66.9	24.4 - 26.3
S	67.0 - 71.9	26.4 - 28.3
M	72.0 - 76.9	28.3 - 30.3
L	77.0 - 81.9	30.3 - 32.2
XL	82.0 - 86.9	32.3 - 34.2
2XL	87.0 - 91.9	34.3 - 36.2
3XL	92.0 - 96.9	36.2 - 38.1
4XL	97.0 - 101.9	38.2 - 40.1
5XL	102.0 - 106.9	40.2 - 42.1
6XL	107.0 - 111.9	42.2 - 44.1
7XL	112.0 - 116.9	44.1 - 46.0

#### COLORS

Black - Cocoa - Beige



#### IMPORTANT

Starting at size 2XL, there is an additional cost of £3.00 per size.

Non-slip  
lace







Hooks for 3  
adjust levels

Intimate  
closure



Material:



"High compression:  
defines the abdomen,  
waist, and back with  
firm control for safe  
recovery. Post-surgical  
sleeves and integrated  
bra design: provides  
support for the arms  
and bust, ideal for the  
second stage of the  
post-operative process

Level compression:



High control

Recommended uses:



Cosmetic surgery



Post surgery



Postpartum



Daily use



High back with  
anatomical design



Maximum  
buttock lift



REF / STYLE

Pos08

 **Posquirúrgica**
**POST-OPERATIVE SHAPEWEAR**

HEALINGGLAM

**AVAILABLE SIZES  
SIZE CHART**

SIZES	WAIST (CM)	HIP (INCHES)
XS	62.0 - 66.9	24.4 - 26.3
S	67.0 - 71.9	26.4 - 28.3
M	72.0 - 76.9	28.3 - 30.3
L	77.0 - 81.9	30.3 - 32.2
XL	82.0 - 86.9	32.3 - 34.2
2XL	87.0 - 91.9	34.3 - 36.2
3XL	92.0 - 96.9	36.2 - 38.1
4XL	97.0 - 101.9	38.2 - 40.1
5XL	102.0 - 106.9	40.2 - 42.1
6XL	107.0 - 111.9	42.2 - 44.1
7XL	112.0 - 116.9	44.1 - 46.0

**COLORS**

Black - Cocoa - Beige

**IMPORTANT**

Starting at size 2XL, there is an additional cost of £3.00 per size.

Post-surgical sleeves



Integrated bra



Non-slip lace





Soft Lycra  
inner lining



Hooks for 3  
adjust levels

Intimate  
closure



Material:



High compression:  
defines the abdomen,  
waist, and back with  
firm control for safe  
recovery. Features  
post-surgical sleeves  
and an integrated bra,  
providing support for  
the arms and bust,  
ideal for the second  
stage of the post-  
operative process

Level compression:



High  
control

Recommended uses:



Cosmetic surgery



Post surgery



Postpartum



Daily use



High back with  
anatomical design



Maximum  
buttock lift



*CurveLuxe*  
By Lucy Castillo



REF / STYLE  
Pos09

 **Posquirúrgica**

**POST-OPERATIVE SHAPEWEAR**  
**WAIST RECOVERY**

**AVAILABLE SIZES**  
**SIZE CHART**

SIZES	WAIST (CM)	HIP (INCHES)
XS	62.0 - 66.9	24.4 - 26.3
S	67.0 - 71.9	26.4 - 28.3
M	72.0 - 76.9	28.3 - 30.3
L	77.0 - 81.9	30.3 - 32.2
XL	82.0 - 86.9	32.3 - 34.2
2XL	87.0 - 91.9	34.3 - 36.2
3XL	92.0 - 96.9	36.2 - 38.1
4XL	97.0 - 101.9	38.2 - 40.1
5XL	102.0 - 106.9	40.2 - 42.1
6XL	107.0 - 111.9	42.2 - 44.1
7XL	112.0 - 116.9	44.1 - 46.0

**COLORS**

Black - Cocoa - Beige



**IMPORTANT**

Starting at size 2XL, there is an additional cost of £3.00 per size.

Wide  
adjustable  
straps



Integrated bra



Non-slip  
lace





Soft Lycra  
inner lining



Hooks for 3  
adjust levels

Intimate  
closure



Material:



High compression:  
sculpts and  
controls the  
abdomen, waist,  
back, and thighs,  
ideal for the post-  
surgical recovery  
process

Level compression:



High control

Recommended uses:



Cosmetic surgery



Post surgery



Postpartum



Daily use



High back with  
structural  
reinforcement



Maximum  
buttock lift



*CurveLux*  
By Lucy Castillo

# RECOMMENDED USES

These icons indicate in which circumstance it's recommended to wear shapewear.



## Soft Lycra inner lining

Helps maintain a fresh feeling on the skin.



## Cosmetic Surgery

They help your recovery to be better and faster.



## Post Surgery

Speed-up the healing process and helps to achieve the best post-surgery results, while also minimizing skin-discomfort and soft tissue damage.



## Postpartum

Thanks to the high amount of these garments, it helps to recover your figure compression in faster after pregnancy.



## Daily use

Adjustment, flexibility and comfort to wear all day.



## Exercise

Provide support to muscles and freedom of movement, helping you increase your physical performance



## Sweat

Specially designed to increase sweating.



## Pregnancy

Provide abdominal and back support helping to correct posture.

*You have unique & diverse body-shaping needs; that's why we've boosted our promise of high-quality products with a wide range of extra benefits.*



# FUNCTIONS & BENEFITS



## Enhances Breasts

-

Create a more volume effect, giving you an instant feminine boost.



## Arms molding

It provides compression in the arms area after surgery. It helps to show a more firm and contoured arms.



## Slims the waist

-

Reduce waist measurement creating an hourglass figure effect.



## Flattens abdomen

-

Maximum compression focused in abdominal area, giving a toned appearance.



## Abdominal support

Reduces the discomfort by the extra belly weight during pregnancy.



## Thermal action

Natural latex in specific areas that pushes fat loss and increase sweating.



## High back with reinforcement

Prevents tension and soreness in your back, caused by poor posture.



## Lumbar support

Gives to your lower back an extra support.



## Butt lift

It gives your buttocks a better shape, allowing you to have a more highlighted silhouette.



## Hips molding

Gives better shape to the hips for a slim figure.



## Legs shaping

Improves the legs appearance looking more stylized.



## TOP-QUALITY FABRIC

Curve Luxe is committed to 100% in your satisfaction; that's why at the top of our list of priorities stands to offer you top-quality products, manufactured using only the finest raw materials and high-quality fabrics & innovative designing technologies. Our High tech fabrics are designed with fibers that are a perfect fit for any area that needs extra stability and comfort with a soft touch on the skin. Our fabrics offer the perfect amount of support and shape to all areas while maximizing comfort.

## BENEFITS

- **Targeted compression** Our collection of tight compression shap and reducing inches from the waist to form a smoother silhouette enhancing natural curves.
- **Best Confection for more control** The manufacturing technique and the waist trainer a resistant and durable garment.
- **Improve Posture** Designed to give lumbar and back support to maintain good posture.



REAL MAX

Curvy

Seamless

8 Reloj de  
Arena III

3Fit

FASHION

⊕ Posquirúrgica



CurvesLuxe  
By Lucy Castillo



REAL MAX

Curvy

Seamless

Reloj de  
Arena

3Fit

FASHION

Posquirúrgica